

Delphi Technologies

Delphi Vehicle Technical Information (VTI)

DIAGNOSTIC TEST COMBINED WITH TECHNICAL INFORMATION

In-depth technical information
integrated in your DS software

Login directly from

AUTO FRONTAL



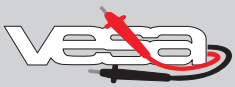
You can extend your diagnostic tool
with technical information.



Service
BULLETINS



Problem
SOLUTIONS



Guided
DIAGNOSING

Key Features:

- > **Extensive library of technical information:** Maintenance, engine, transmission, steering and suspension, brakes, exterior/interior and electronics.
- > **Provides adjustment data:** Technical drawings, fuses and relays, manuals and procedures, repair times, wiring diagrams and diagnostics.
- > **An easy to use interface:** Select a vehicle by Make/Model, TecDoc Number, KBA Number, Type Approval and VIN.
- > **Additional information:** Recalls, technical service bulletins and cases (real-world advice from technicians).
- > **Coverage of all leading European makes and models**
- > **Seamless integration:** Delphi's DS software has the ability to link with parts catalogues and ERP systems.



www.elektropartner.com

A Helping Hand with our Vehicle Technical Information.

A few examples of the in-depth technical information available in our DS software. To streamline the diagnosis, the vehicle ID is carried over from the DS software to the VTI, so you only see information relevant to the vehicle you are working on.



TECHNICAL INFORMATION

The smallest adjustments can make a big difference - with adjustment data for multiple systems we've got you covered.

Parameter	Value	Unit
Engine code	C6KA	
Capacity	1300	(cc)
Distribution type		
Timing chain		
Number of cylinders	4	
Signal at maximum power	8500	(rpm)
Fuel system (Inake and type)	13.0-0.2	
Ring color	VW 02 505 426	
Spark plug (Inake and type)		
Spark plug gap	0.8 - 0.9	(mm)
Fuel pump pressure	3.5 - 7.0	(bar)
Residual fuel pressure	0.0/0.0	(bar/InchHg)
Number of spark plugs	4	
Spark plug layout (Such an anordnung)		

COMPONENT LOCATION

Interactive technical drawings make component location and fuse identification quick and easy.

GUIDED DIAGNOSING

Test, don't guess! You've checked your fault codes and reviewed the live data. With guided diagnostics you can now follow an easy step by step procedure to confirm the failure.

M1 - Oxygen sensor in front of the catalytic converter

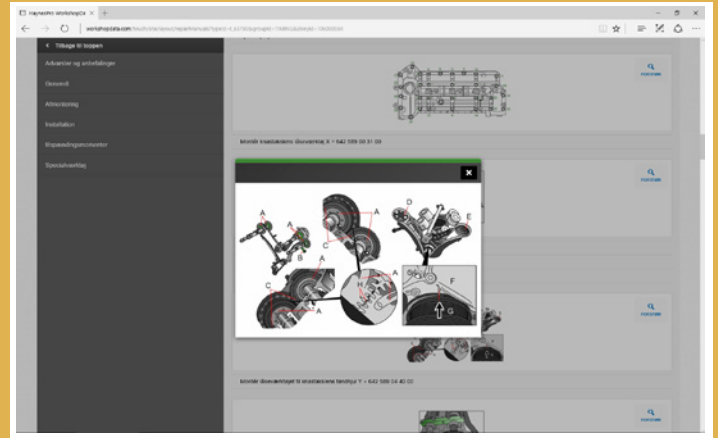
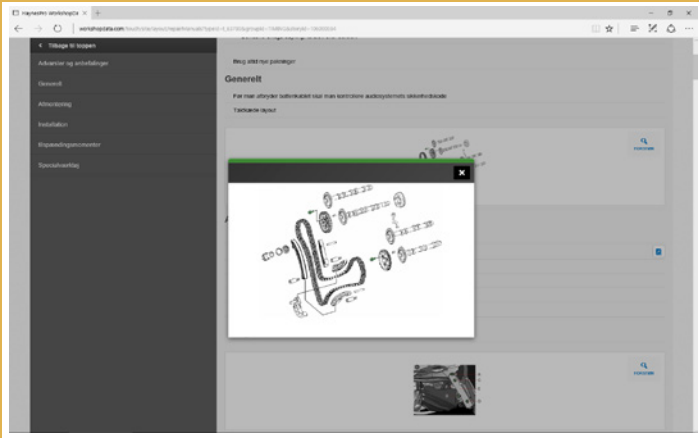
1. Check the heating element resistance.
2. Measure the resistance between pin 1 and 2. Is it between 4 and 6 Ohm?
3. Check the heating element supply voltage (pin 3).
4. Check the oxygen sensor ground (pin 1).
5. Check the connectivity of pin 4.
6. Check the connectivity of pin 5.

GROUND POINT

The route to many electrical problems is the circuit's grounding point. With interactive drawings you can be sure you are testing the right one.

TIMING BELT / CHAIN

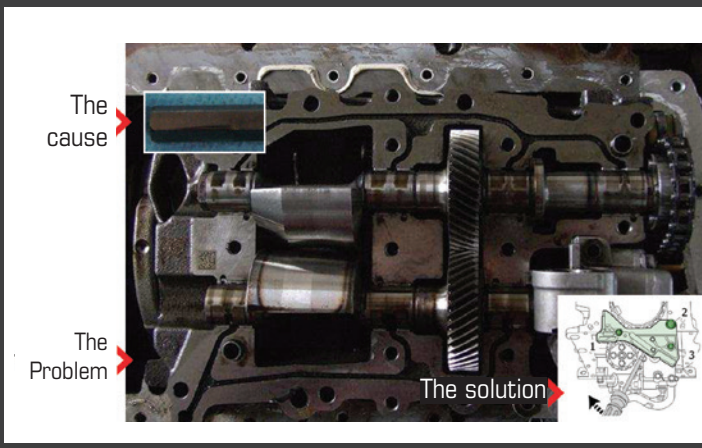
In connection with timing belt replacement or check/replacement of timing chain, this program includes the complete disassembly and assembly manual covering all facets of this work. This means that you are guided through the entire disassembly and assembly procedure step by step, component by component.



Problem SOLUTIONS

SMARTCASE

Smart case guides you through the symptoms, cause and solution, including step by step on how to repair the fault.



Service BULLETINS

SMARTFIX

Technical service bulletins contain the manufacturer's recommendations for service and maintenance. They include checklists of inspection, repair and parts requiring replacement as well as work time.

Power loss; The engine switches to limp home mode; The engine warning light illuminates (Change)

Symptom
Power loss
The engine switches to limp home mode
The engine warning light illuminates
Fault code:

Cause
Variable geometry mechanism malfunction

Solutions
Start the engine
Connect the diagnostic tool
Check the turbocharger pressure
Expected values:
At idle speed
Engine at full load

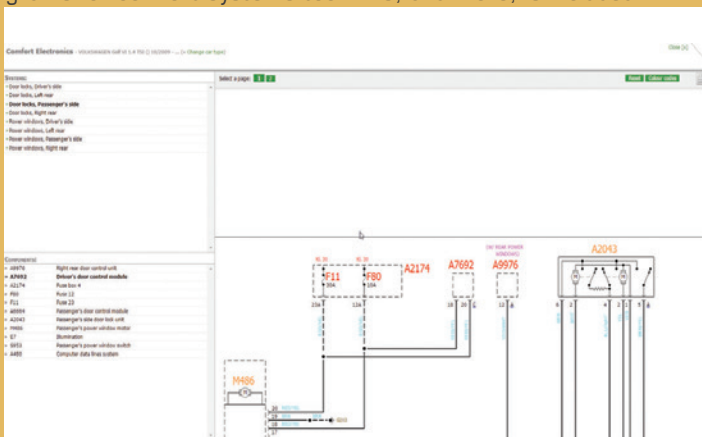
If the displayed value is different:
Air inlet system:
Check all the connections for damage and leaks

If no damage or leaks are found
Check the turbocharger variable geometry mechanism
Use a vacuum pump

Check the turbocharger blades for wear:
Renew if necessary

WIRING DIAGRAMS

Don't get caught out by only having engine management wiring diagrams. With electronics from bumper-to-bumper you need diagrams for comfort systems too. This, and more, is included.

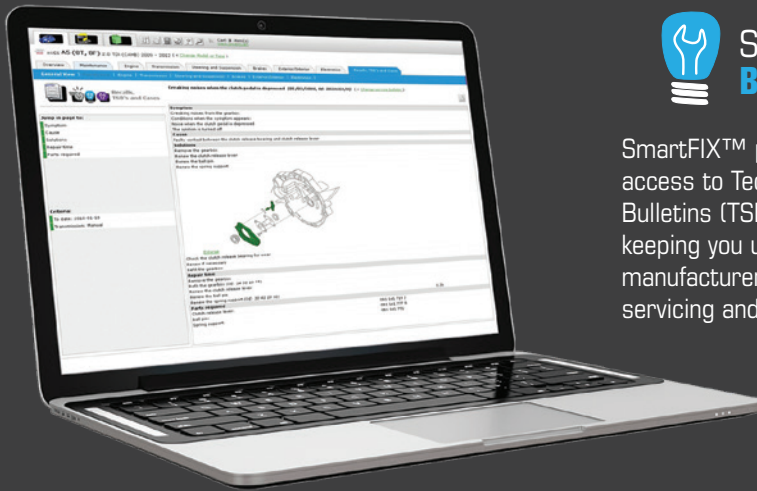


REPAIR TIME

It's all in the planning. Make your workshop more efficient by planning repair times. You can calculate overlaps too!

AVWR	Description	h	€	%	€ (HR)
11603005000	Check function, condition and wear of clutch *	0.10	50.00	21.08	0.10
11603005000	Remove/fit clutch slave cylinder	1.40	50.00	21.08	1.40*5.00
	Includes: Remove/fit air filter housing				
	Includes: Loosen/tighten/shift system				
	Includes: Remove/fit clutch slave cylinder				
11603005000	Remove/fit clutch master cylinder	1.70	50.00	21.08	1.70*5.00
	Includes: Remove/fit upper engine cover				
	Includes: Loosen/tighten battery cable(s)				
	Includes: Remove/fit battery				
	Includes: Remove/fit battery holder				
	Includes: Remove/fit drivers' line airbag				
	Includes: Remove/fit exterior lighting switch				
	Includes: Remove/fit left instrument panel display box				
	Includes: Remove/fit foot lever mechanism bearing/mounting block				
	Includes: Loosen/tighten clutch supply hose				
	Includes: Remove/fit clutch master cylinder				
	Includes: Read out/walk/ate/safe fault store				
11603005000	Renew clutch master cylinder	0.00	50.00	21.08	0.00
11613019900	Disassemble/assemble sealbox (gearbox removed)	5.90	50.00	21.08	6.98*5.00
	Includes: Disassemble/assemble gearbox				
	Includes: Adjust drive shaft				
	Includes: Adjust output flange shaft				
	Includes: Adjust differential				
	Includes: Follow-up action: Remove/fit gearbox				
	Total time (h):	16.32			
	€ (HR):	826.02			

* Recommended average value. Editing (or changes made) to this value are the sole liability of the user.
(*) Time is shown in hours and hundredths of hours e.g. 1 hour 30 minutes = 1.50 hours.
All job times are compiled from OEM documentation, using best practice experience. While every care has been taken to ensure accuracy in compiling this data, no responsibility can be accepted for any omissions or consequential damage and/or changes made by user.



 **Service BULLETINS**

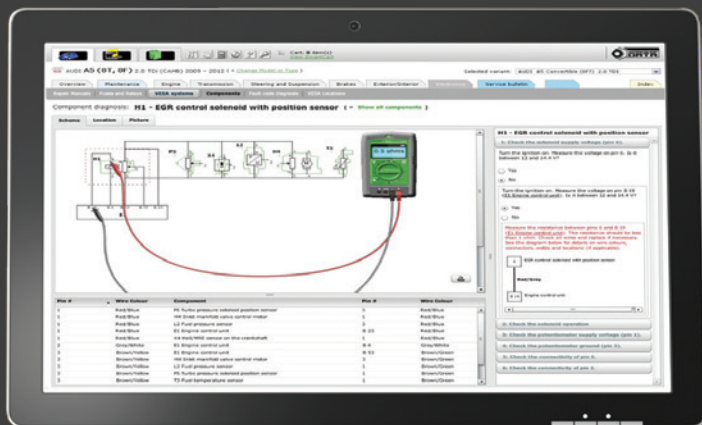
SmartFIX™ provides instant access to Technical Service Bulletins (TSBs) and recall data, keeping you up-to-date with manufacturer's recommended servicing and maintenance work.

- **TSBs and recall data:** direct from the manufacturer.
- **Quick identification:** of known issues.
- **Links to other data:** including specifications, procedures, drawings, manuals and fault codes for effective resolution.
- **Step-by-step instructions:** reducing the amount of non-billable hours.
- **More faults can be fixed in the workshop:** for increased customer retention.

 **Problem SOLUTIONS**

With information sourced from industry experts, SmartCASE™ is a technical database, offering proven, real-world solutions to less common issues.

- **Resolution of issues:** with verified fixes and tips from industry professionals.
- **Access to a range of cases:** with suggested solutions, including fault codes and repair procedures.
- **Quick identification of less common problems:** saving time and money.





Your own electronics assistant.

VESA™ (Vehicle Electronics Smart Assistant) provides guided step by step component testing for:

- Engine**
- Braking (ABS/ESP)**
- Power steering**
- Air conditioning**

- **Instant access:** to an extensive database of detailed information on electronic systems and the CAN-Bus.
- **Quick and precise identification:** of system and component errors.
- **Step-by-step intelligence:** guided diagnostics.
- **Increases workshop efficiency.**
- **Reduces the amount of non-billable hours.**